

BlinkSigns



High-quality
signs, faster.



ABOUT US

**Headquartered in
Cleveland, OH**

Top 100 Company in Ohio

WBE + MBE Certified

**Full Service
Signage + Graphics**

**Provide Quality
Signage Solutions
in North America**



BLINK SIGNS TODAY

100+ Employees

Prototype Services Available

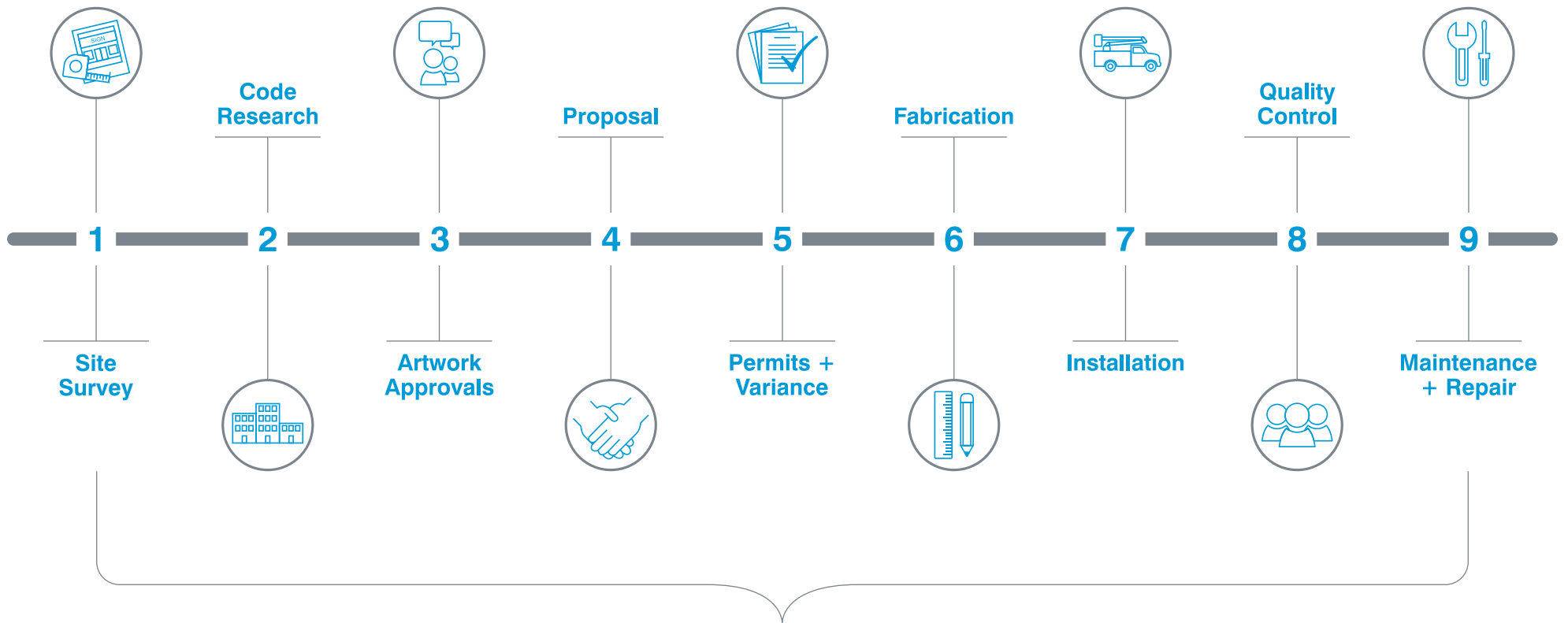
Product Development
Testing/Safety Agency Approvals
Key Technology Research
Intellectual Property

Four U.S. Manufacturing Facilities

Cleveland, OH
Angola, IN
McCordsville, IN
San Antonio, TX

Serving North America





Every step along our process is audited for quality control

EXTERIOR SIGNAGE

- Channel Letters
- Blade Signs
- Cabinet Signs
- Awnings
- Monuments/Pylons Signs
- EMC/Digital Signs
- Direction Signs
- Non Illuminated Signs
- Wood Signs & HDU

INTERIOR SIGNAGE

- ADA Signs
- Interior Dimensional Letters
- Storage Unit Numbers
- Lobby Signs
- Digital Displays
- Direction/Wayfinding Signs
- Room ID Signs

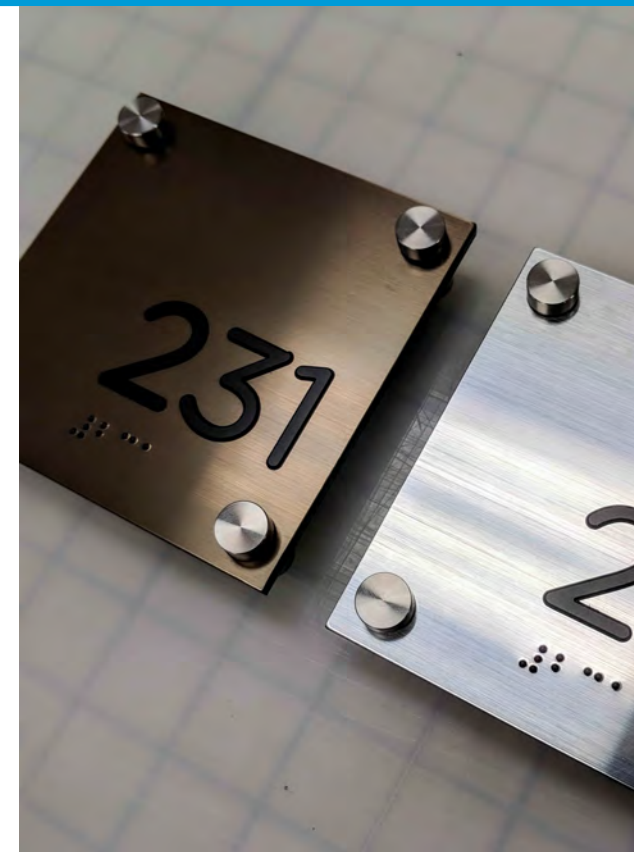
PRINT & GRAPHICS

- A Frame Signs
- Banners
- Banner Bags
- Yard Signs
- Window Lettering
and Graphics
- Vehicle Graphics
- Wall and Floor Graphics

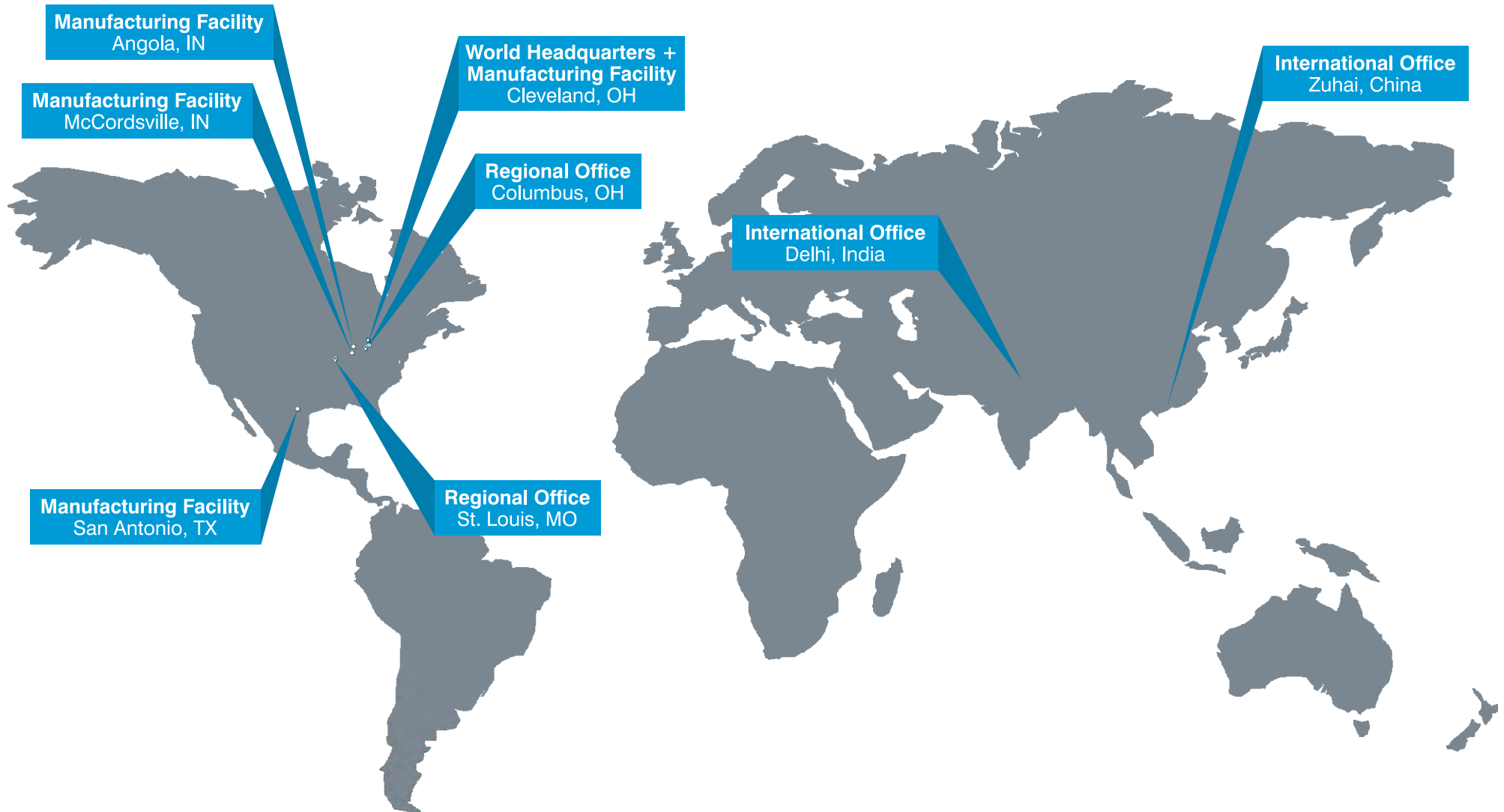
BlinkSigns

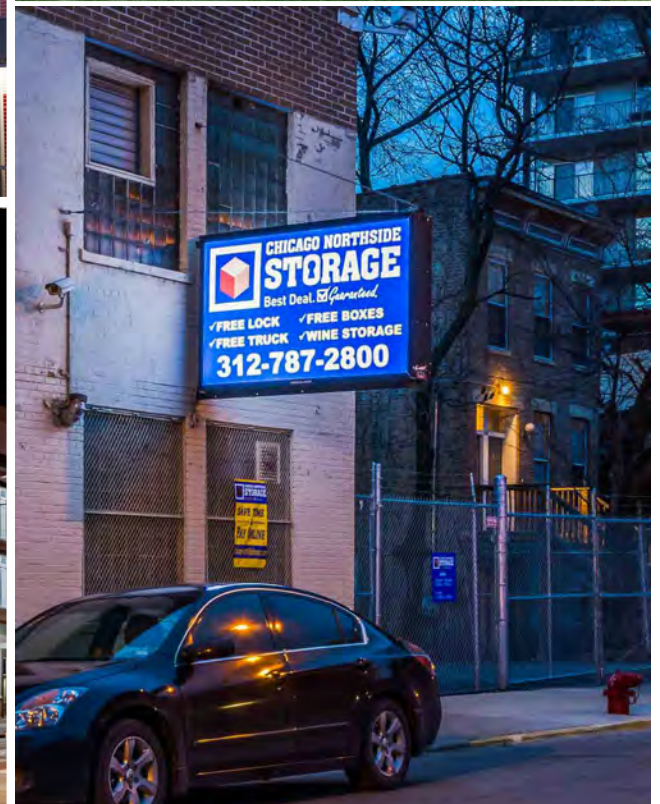
EXTERIOR SIGNAGE















Christine Banc
Client Support Manager
• National Project Management
c.banc@blinksigns.com
O:216.503.2568 Ext.104



Steve Weber
National Sales
steve@blinksigns.com
D: 216.815.0330



Brittani Shipek
Director of Operations
• Executive Management
brittani@blinksigns.com
O:216.503.2568 Ext.122



Darlene Zwolinski
Director of Business Development
• Swag
darlene@blinksigns.com
O:216.503.2568 Ext.115



Danielle Bell
Senior Project Manager
• National Project Management
d.bell@blinksigns.com
O:216.503.2568 Ext.131